

References

- Pacifico A, Ardigò M, Frascione P, Damiani G, Morrone A. Phototherapeutic approach to dermatological patients during the 2019 coronavirus pandemic: Real-life data from the Italian Red Zone. *Br J Dermatol*. 2020. <http://dx.doi.org/10.1111/bjd.19145>.
 - Lim HW, Feldman SR, Van Voorhees AS, Gelfand JM. Recommendations for phototherapy during the COVID-19 pandemic. *J Am Acad Dermatol*. 2020. <http://dx.doi.org/10.1016/j.jaad.2020.04.091>.
 - Narla S, Lyons AB, Kohli I, Torres AE, Parks-Miller A, Ozog DM, et al. The importance of the minimum dosage necessary for UVC decontamination of N95 respirators during the COVID-19 pandemic. *Photodermatol Photoimmunol Photomed*. 2020. <http://dx.doi.org/10.1111/phpp.12562>.
 - Hamzavi IH, Lyons AB, Kohli I, Parks-Miller A, Gelfand J, Lim HW, et al. Ultraviolet germicidal irradiation: possible method for respirator disinfection to facilitate reuse during COVID-19 pandemic. *J Am Acad Dermatol*. 2020. <http://dx.doi.org/10.1016/j.jaad.2020.03.085>.
- P. Aguilera,^{a,*} Y. Gilaberte,^b A. Pérez-Ferriols,^c D. de Argila,^d J. Aguilera,^e M.V. de Galvez,^e M.T. Rodríguez Granados,^f J. Gardeazabal,^g J.M. Carrascosa,^h del Grupo Español de Fotobiología
- ^a Servicio de Dermatología, Hospital Clínic, Barcelona, Spain
^b Servicio de Dermatología, Hospital Universitario Miguel Servet, Zaragoza, Spain
^c Servicio de Dermatología, Hospital General Universitario, Valencia, Spain
^d Servicio de Dermatología, Hospital Universitario de La Princesa, Madrid, Spain
^e Unidad de Fotobiología Dermatológica y Oncología Cutánea, Departamento de Dermatología y Medicina, Universidad de Málaga, Málaga, Spain
^f Facultad de Medicina, Complejo Hospital Universitario, Santiago de Compostela, La Coruña, Spain
^g Servicio de Dermatología, Hospital Universitario Cruces, Baracaldo, Vizcaya, Spain
^h Servicio de Dermatología, Hospital Germans Triás i Pujol, Badalona, Barcelona, Spain
- * Corresponding author.
 E-mail address: aguilisha@hotmail.com (P. Aguilera).
- <https://doi.org/10.1016/j.adengl.2020.07.004>
 1578-2190/ © 2020 AEDV. Published by Elsevier España, S.L.U. This is an open access article under the CC BY-NC-ND license (<http://creativecommons.org/licenses/by-nc-nd/4.0/>).

Borderline Tuberculoid Leprosy in Erythema Nodosum Leprosum Reaction Mimicking Sweet's Syndrome[☆]



Lepra tuberculoide borderline en paciente con reacción lepromatosa tipo eritema nodoso simulando un síndrome de Sweet

Dear Editor:

An 11-year-old Indian boy presented with sudden onset of tender, erythematous and edematous plaques with slight vesiculations over face, upper and lower extremities associated with high grade fever and arthralgia along with edema over the hands and feet for 10 days (Fig. 1A and B). His past and family history was non-contributory. On examination he was febrile (39 °C) and his both ulnar nerves were thickened and tender, however the sensations over the lesions were intact. Systemic review and general examination were normal. Laboratory investigations revealed leukocytosis with neutrophilia, and raised ESR; whereas rest all investigations were within normal limits. Biopsy of the lesion revealed

infiltration of dermo-epidermal junction by neutrophils, lymphocytes, whereas deeper dermis and subcutaneous tissue showed epitheloid granulomas with fibrinoid necrosis and inflammatory infiltrates consisting neutrophils, lymphocytes and macrophages suggestive of borderline tuberculoid leprosy (BT) in type 2 lepra reaction (T2LR) (Fig. 2). Slit-skin smear taken from the lesion for the acid-fast bacilli was negative. Patient was given multidrug therapy-paucibacillary (MDT-PB) (rifampicin 450 mg one a month and dapsone 50 mg daily) as per WHO guidelines, along with oral steroid 1 mg/kg/per day and tapered according to the response. His skin lesions and constitutional symptoms improved significantly (Fig. 3A and B).

T2LR is an immune complex mediated complication of lepromatous leprosy (LL) and sometimes borderline lepromatous leprosy (BL) and most of it occurs during the first year of MDT.¹ It's characterized by sudden crops of red, tender nodules or plaques, which occasionally become vesicular, pustular, bullous, or necrotic.¹ Systemic inflammation in T2LR may affect the nerves, eyes, joints, testes, and lymph nodes. Erythema nodosum leprosum (ENL) is the most common manifestation of T2LR. LL and a bacillary index greater than 4+ are the major risk factors, whereas infections, vaccination, stress pregnancy, lactation, and puberty have also been implicated in T2LR.¹

In our patient, the lesions closely mimicked as that of Sweet's syndrome and presence of fever along with neutrophilia, raised ESR (which are minor criteria to diagnose Sweet's syndrome)² added more dilemma. As lepra reactions are followed by surge of inflammatory cells, findings such as fever, leukocytosis, neutrophilia, raised ESR

[☆] Please cite this article as: Pawar M, Zawar V, Kumavat S. Lepra tuberculoide borderline en paciente con reacción lepromatosa tipo eritema nodoso simulando un síndrome de Sweet. *Actas Dermosifiliogr*. 2021;112:75–77.



Figure 1 A, B: Erythematous and edematous plaques over the face, some of them showing slight vesiculations.



Figure 2 Histology showing infiltration of neutrophils, lymphocytes and plasma cells at the dermo-epidermal junction. Deeper dermis showing distorted epithelioid cell granulomas in fibrinoid necrosis and inflammatory infiltrate of neutrophils, lymphocytes, macrophages and plasma cells. (A- Original magnification X 100, B- Original magnification X 400, Haematoxylin and Eosin stain).

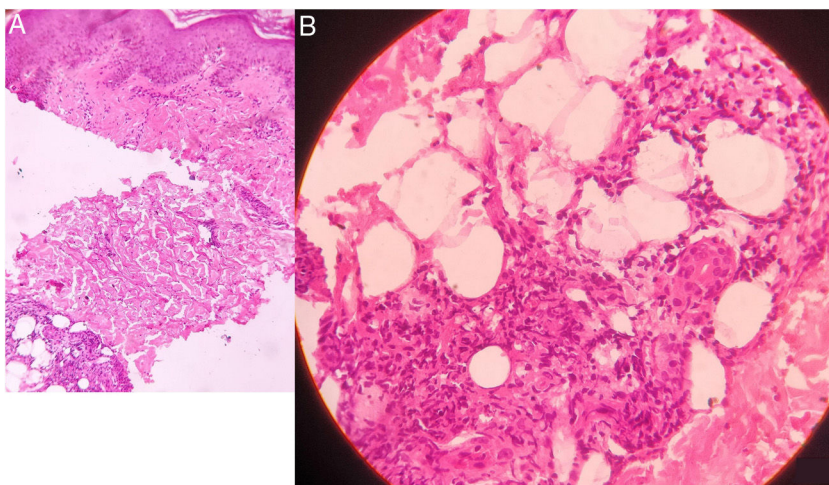


Figure 3 A, B: Complete resolutions of the lesions after MDT therapy and oral steroids at 4 weeks.

and CRP are common to occur. Moreover, on histology there were numerous neutrophils in the dermis, which is a histological feature of Sweet's syndrome. Also steroid is quite effective in both the diseases; hence one might get deceived by the improvement of patient's symptoms. Anesthesia over cutaneous lesions and enlarged and tender peripheral nerves point towards leprosy; and AFB positive bacilli on SSS and specific histopathologic findings aid in confirming the diagnosis. In our patient thickened and tender nerves and typical histology clinched the diagnosis of ENL. Interestingly, in our case, the reactional lesions were the presenting symptoms, as patient did not have a preceding diagnosis of leprosy, whereas most reported cases mimicking Sweet's syndrome have prior diagnosis of BL or LL.^{1,3–5}

Corticosteroid is the drug of choice in T2LR, whereas thalidomide is the drug of choice for severe ENL. MDT should be started immediately or should be continued if a patient is already taking it. Corticosteroids suppress the inflammatory immune response to *M. leprae* antigens and also reduce intraneural and cutaneous edema.^{1,3–5}

Awareness of Sweet's syndrome like T2LR and its prompt diagnosis and treatment is essential to prevent its dreaded sequelae in potentially treatable cases.

Conflicts of interest

The authors declare that they have no conflicts of interest.

References

1. Vijendran P, Verma R, Vasudevan B, Mitra D, Badad A, Neema S. Rare atypical presentations in Type 2 lepra reaction: a case series. *Int J Dermatol*. 2014;53:323–6.
2. Cohen PR. Sweet's syndrome – a comprehensive review of an acute febrile neutrophilic dermatosis. *Orphanet J Rare Dis*. 2007;2:34, <http://dx.doi.org/10.1186/1750-1172-2-34>.
3. Gunawan H, Yogya Y, Hafinah R, Marsella R, Ermawaty D, Suwarsa O. Reactive perforating leprosy, erythema multiforme-like reactions, sweet's syndrome-like reactions as atypical clinical manifestations of Type 2 leprosy reaction. *Int J Mycobacteriol*. 2018;7:97–100.
4. Chiaratti FC, Daxbacher EL, Neumann AB, Jeunon T. Type 2 leprosy reaction with Sweet's syndrome-like presentation. *An Bras Dermatol*. 2016;91:345–9.
5. Heng YK, Chiam YT, Giam YC, Chong WS. Lepromatous leprosy in erythema nodosum leprosum reaction mimicking Sweet's syndrome. *Int J Dermatol*. 2011;50:1124–5.

M. Pawar,* V. Zawar, S. Kumavat

Servicio de Dermatología, Facultad de Medicina, Hospital y Centro de Investigación Dr. V.P., Nashik, India

* Corresponding author.

E-mail address: manojpawar624@yahoo.com (M. Pawar).

<https://doi.org/10.1016/j.adengl.2020.11.001>

1578-2190/ © 2020 Published by Elsevier España, S.L.U. on behalf of AEDV. This is an open access article under the CC BY-NC-ND license (<http://creativecommons.org/licenses/by-nc-nd/4.0/>).

Discoid Lupus Erythematosus in a Patient With Alopecia Totalis[☆]



Lupus eritematoso discoide en una paciente con alopecia totalis

Dear Editor:

We herein describe a rare case of discoid lupus erythematosus (DLE) in a patient with alopecia totalis.

A 42-year-old female developed alopecia on the scalp, which worsened and involved all areas of the scalp 10 years previously. She received various treatments, such as topical corticosteroids, topical carpronium chloride, oral prednisolone, intra-lesional triamcinolone acetonide, and cryotherapy, for five years without success, and thus discontinued therapy a few years previously. She visited the dermatology clinic at Hanawa Kousei Hospital, complaining of asymptomatic facial erythemas which appeared

one year previously. Physical examination revealed infiltrative scaly erythemas on the cheek, nose, lips, and upper back (Fig. 1a,b). Total alopecia of the scalp was also observed (Fig. 1a). Her eyebrows fell out, while the eyelashes remained intact. Laboratory examination showed positive anti-nuclear antibody (ANA) (1:1280, speckled), whereas other data such as complete blood count, liver and renal function, serum complement levels, anti-double strand DNA antibody, anti-Sm antibody, anti-SS-A antibody, anti-SS-B antibody, and antiphospholipid antibody were all within normal range. A biopsy specimen taken from the cheek revealed individual cell keratinization, liquefaction of epidermal basal membranes, and focal mononuclear cell infiltration in the dermis (Fig. 1c). Examination by direct immunofluorescence showed linear deposition of IgG, IgM, and C3. A diagnosis of DLE was made. Facial and back erythemas much improved by oral hydroxychloroquine (Plaquenil[®], Sanofi, Swiss) (200 mg and 400 mg per alternate day) six months later; however, her alopecia remained unchanged.

Our patient suffering alopecia totalis developed DLE with nearly nine years' interval, and alopecia was already stable when the DLE lesions appeared. Her scalp alopecia was non-scarring without erythema, and was therefore not identified as lupus alopecia, although biopsy was not carried out.

[☆] Please cite this article as: Yamamoto M, Yamamoto T. Lupus eritematoso discoide en una paciente con alopecia totalis. *Actas Dermosifiliogr*. 2021;112:77–79.