

## CASE AND RESEARCH LETTER

### [Translated article] Intertriginous Eruptive Syringoma



#### Siringomas eruptivos intertriginosos

To the Editor,

Syringomas are benign tumors of the sweat gland, primarily eccrine.<sup>1,2</sup> Their etiopathogenesis is unknown, although a multifactorial origin is believed to exist (genetic, hormonal, frictional).<sup>3</sup>

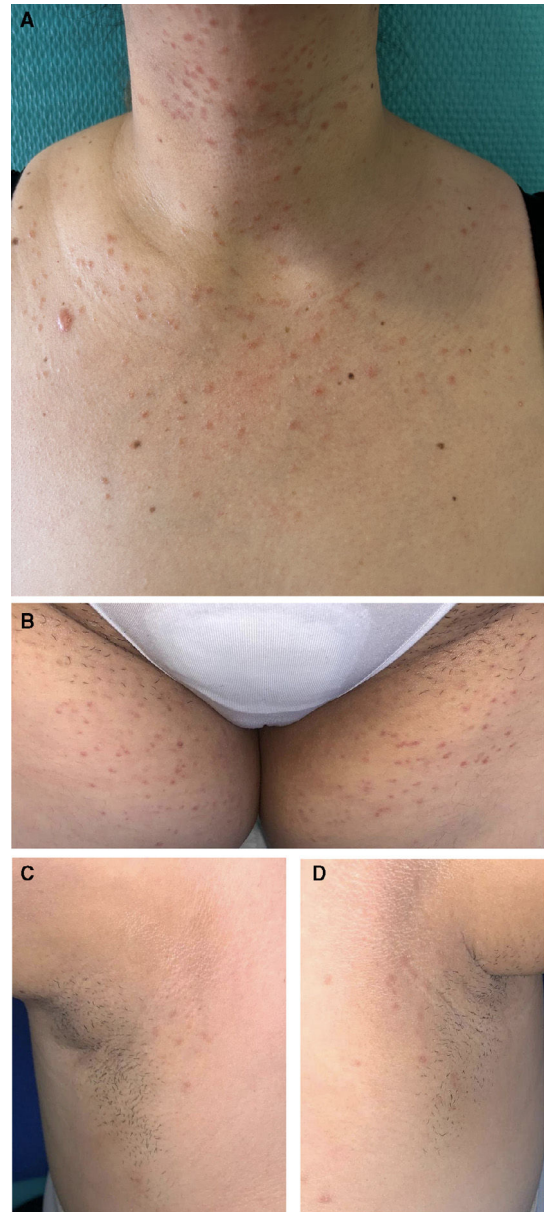
Friedman et al. categorized syringomas into 4 groups based on their clinical characteristics: localized, generalized (which includes the eruptive form), familial, and those associated with Down syndrome.<sup>2</sup>

Eruptive syringomas are a rare variant of syringomas that appear as multiple skin-colored or slightly pigmented papules on the neck, anterior chest, axillae, or periumbilical and pubic regions, before or during puberty.<sup>1,4</sup> Cases of eruptive syringomas have been described with involvement only in intertriginous areas, making their diagnosis even more challenging.<sup>1</sup>

A 38-year-old Caucasian woman, with a past medical history of hypothyroidism was referred to our service with a 2-year history of asymptomatic skin lesions initially appearing on her neck and chest, but later progressing over several months to involve the submammary folds, axillae, and groin. She had no family history of similar lesions.

Lesions were asymptomatic except for occasional mild pruritus and progressively increased in number, becoming an esthetic concern for the patient. She did not associate them with any trigger factors and had not received any prior treatment for this condition.

Physical examination revealed periorcular papules of skin color, though notably, well-demarcated, yellow/orange papules 3–4 mm in diameter, bilateral and fairly symmetrical were present in the folds (neck, axillae, groin, and submammary regions) (Fig. 1, A–D). Hair and nails were normal, with no involvement of mucous membranes.

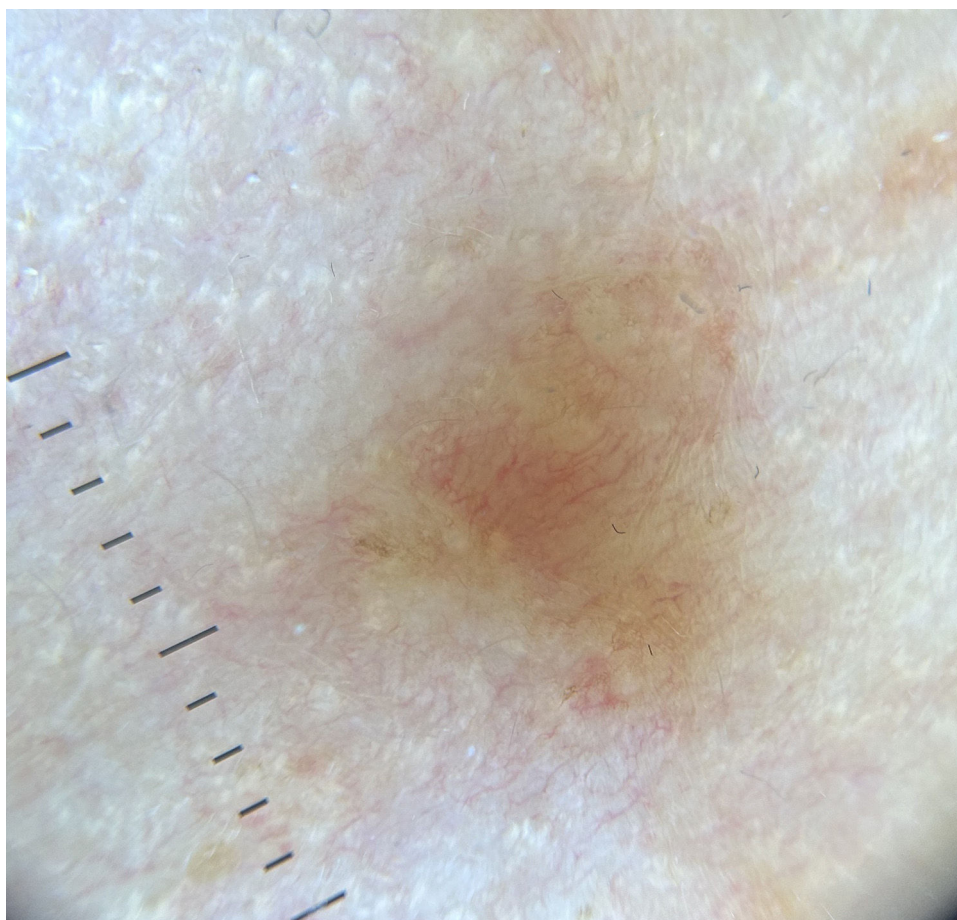


**Figure 1** (A–D) Multiple erythematous-yellowish, monomorphic, symmetrical papules on the neck and chest, groin, and axillae.

DOI of original article:  
<https://doi.org/10.1016/j.ad.2023.07.036>

<https://doi.org/10.1016/j.ad.2024.11.017>

0001-7310/© 2024 AEDV. Published by Elsevier España, S.L.U. This is an open access article under the CC BY-NC-ND license (<http://creativecommons.org/licenses/by-nc-nd/4.0/>).



**Figure 2** Fine erythematous-brownish reticulated lines on a light brown background.

Dermoscopy showed fine brown-reddish reticulated lines on a light brown background (DermLite DL4, polarized mode, magnification  $\times 10$ ) (Fig. 2).

A 4-mm punch biopsy was taken, which showed a benign ductal epithelial proliferation surrounded by fibrous stroma along with a perivascular and perianexial inflammatory infiltrate on the superficial dermis, not extending any further or affecting the deep border of the biopsy. Ducts were formed by  $\geq 1$  layers of small cuboidal cells, without atypia, and some cells exhibited a tadpole-shaped configuration (Fig. 3, A–C).

The patient's clinical picture, along with the histopathological findings, was consistent with a diagnosis of eruptive eccrine syringomas in intertriginous areas. Treatment with 10 mg of oral isotretinoin daily was started, which was later up titrated to 20 mg daily. However, after 6 months of treatment, the patient not only did not report improvement, but also developed more lesions, particularly on the neck and submammary folds.

Eruptive syringomas are a diagnostic challenge as they are a rare variant affecting atypical areas.<sup>1,4</sup> Literature reports fewer than a dozen cases of eruptive syringomas affecting only intertriginous areas (Table 1), making this presentation exceptional.<sup>3–8</sup> In cases involving folds, the armpits are the most common location, typically with bilateral damage with involvement of both axillary and inguinal folds being extremely rare.<sup>8</sup>

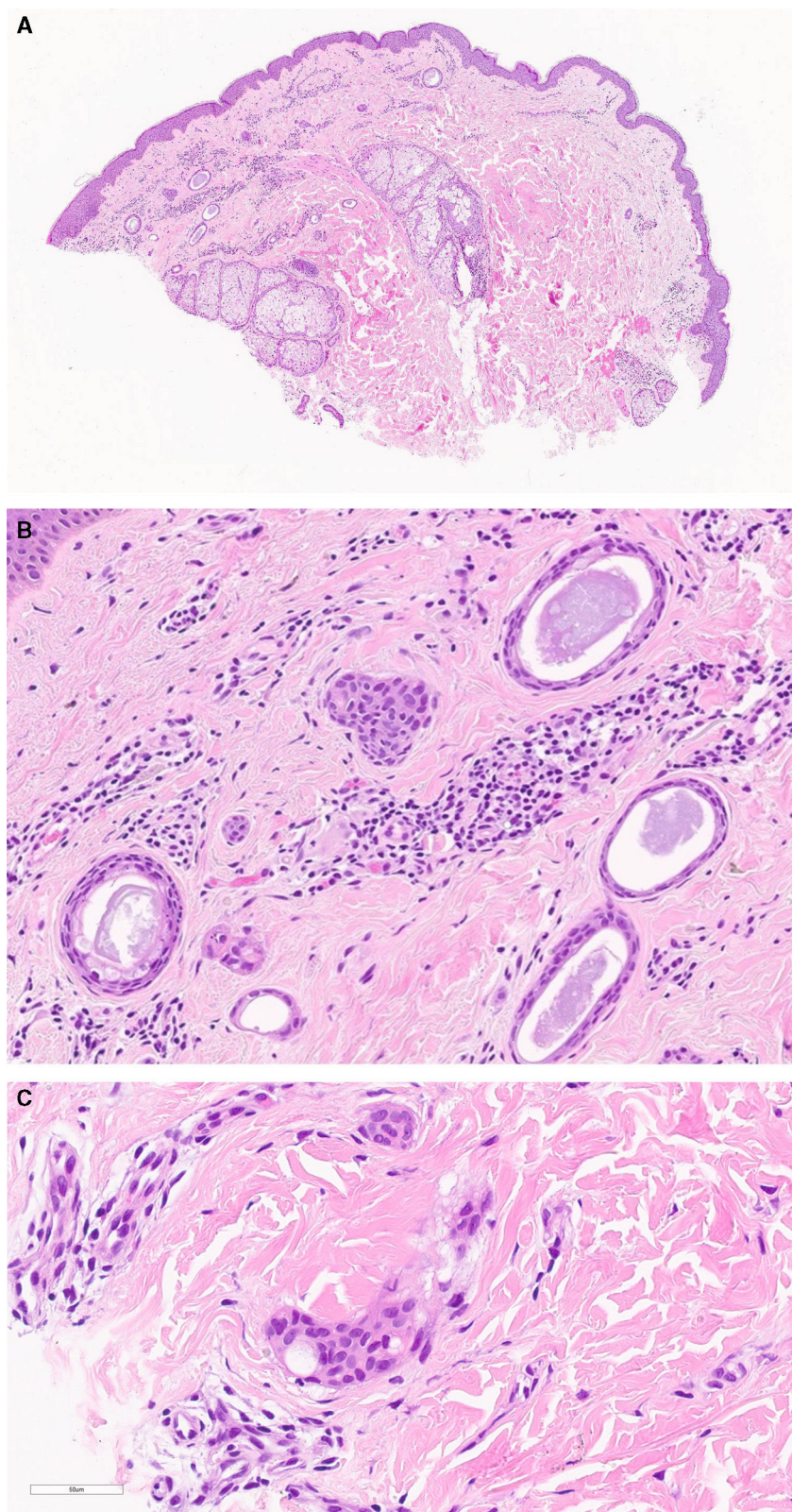
Differential diagnoses includes vulgar acne, sebaceous hyperplasia, milia, lichen planus, eruptive xanthomas, Darier's disease, pigmented urticaria, flat warts, and granuloma annulare.

Definitive diagnosis is established through histological examination, which reveals a circumscribed proliferation of ducts on the superficial dermis, formed by 2 layers of cuboidal epithelial cells, sometimes showing comma-like extensions, known as the tadpole pattern.<sup>9</sup>

Although not well defined, dermoscopy may be a useful tool, as the most widely described pattern in eruptive syringomas shows fine reticulated brown lines on a light brown background. Occasionally, white areas or points interrupt the network, corresponding to the openings of eccrine glands. Dermoscopy helps differentiate from other conditions, such as lichen planus, where white reticulated lines, also known as "Wickham's striae," are observed.<sup>10,11</sup>

Treatment is not standardized, and many therapeutic options have been used, including topical and oral retinoids, topical atropine, cryotherapy, electrocoagulation, chemical peeling, surgical excision, and laser therapy, with generally unsatisfactory results, as seen in our patient.<sup>1,7,11,12</sup>

In conclusion, we report a new case of intertriginous eruptive syringomas, a rarely published location, although we believe these cases of syringoma may be underdiagnosed.



**Figure 3** (A) Punch biopsy showing a benign ductal epithelial proliferation, localized only in the superficial dermis. Surrounding stromal fibrosis is observed, as well as an inflammatory infiltrate with a perivascular and perianexial pattern (H&E, panoramic view). (B) At higher magnification, the lesion consists of nests and ducts formed by 1 or more layers of small cuboidal cells, without atypia (H&E  $\times 20$ ). (C) Occasionally, they may adopt a tadpole-like pattern (H&E  $\times 50$ ).

**Table 1** Cases of eruptive syringomas.

Authors (year)	Gender	Age of onset	Location
Azon-Masoliver et al. (1993)	Female	Puberty	Armpits
Kakinuma et al. (2004)	Male	15	Armpits
Garrido-Ruiz et al. (2008)	Male	29	Groin
Nosrati et al. (2008)	Female	14	Armpits
West et al. (2008)	Female	18	Armpits and groin
Heo et al. (2010)	Female	22	Armpits
Sakiyama et al. (2014)	Female	40	Neck, armpits, and groin
Sakiyama et al. (2014)	Female	35	Armpits and groin
Litvinov et al. (2014)	Male	51	Groin
Roga et al. (2015)	Male	19	Periocular, neck, and armpits
Sato et al. (2015)	Female	10	Armpits

## Conflicts of interest

None declared.

## References

- Soler-Carrillo J, Estrach T, Mascaró JM. Eruptive syringoma: 27 new cases and review of the literature. *J Eur Acad Dermatol Venereol.* 2001;15:242–6.
- Friedman SJ, Butler DF. Syringoma presenting as milia. *J Am Acad Dermatol.* 1987;16:310–4.
- Litvinov IV, Jafarian F. Eruptive syringomas in the groin. *CMAJ.* 2014;186:612.
- Lei H, Wang Z, Ma X, Zhang Z, Feng Y, Zheng Y. Eruptive syringomas: summary of ninety cases and a brief literature review. *J Cosmet Dermatol.* 2023;22:1128–33, <http://dx.doi.org/10.1111/jocd.15489>.
- Nosrati N, Coleman NM, Hsu S. Axillary syringomas. *Dermatol Online J.* 2008;14:13.
- Garrido-Ruiz MC, Enguita AB, Navas R, Polo I, Rodríguez Peralto JL. Eruptive syringoma developed over a waxing skin area. *Am J Dermatopathol.* 2008;30:377–80.
- West EA, Yesudian PD. Multiple papules affecting the axillae and groin. *Clin Exp Dermatol.* 2008;33:371–2.
- Sakiyama M, Maeda M, Fujimoto N, Satoh T. Eruptive syringoma localized in intertriginous areas. *J Dtsch Dermatol Ges.* 2014;12:72–3.
- Lee JH, Chang JY, Lee KH. Syringoma: a clinicopathologic and immunohistologic study and results of treatment. *Yonsei Med J.* 2007;48:35–40.
- Aleissa M, Aljarbou O, AlJasser MI. Dermoscopy of eruptive syringoma. *Skin Appendage Disord.* 2021;7:401–3.
- Taneja G, Hazarika N, Bhatia R. Eruptive syringomas on the neck: clinicopathological and dermoscopic features. *Dermatol Pract Concept.* 2021;11, e2021022.
- Williams K, Shinkai K. Evaluation and management of the patient with multiple syringomas: a systematic review of the literature. *J Am Acad Dermatol.* 2016;74:1234–40, <http://dx.doi.org/10.1016/j.jaad.2015.12.006>.

M.C. Matei<sup>a,\*</sup>, L. Bernal Masferrer<sup>a</sup>, E.I. Abecia Martínez<sup>b</sup>, T. Gracia-Cazaña<sup>a</sup>

<sup>a</sup> *Departamento de Dermatología, Hospital Miguel Servet, Zaragoza, Spain*

<sup>b</sup> *Departamento de Anatomía Patológica, Hospital Miguel Servet, Zaragoza, Spain*

\* Corresponding author.

E-mail address: [marimatei.96@gmail.com](mailto:marimatei.96@gmail.com) (M.C. Matei).