

## CASES FOR DIAGNOSIS

### Purpura and Necrotic Plaques on the Limbs



### Púrpura y placas necróticas en las extremidades

#### Case Presentation

An 82-year-old man was admitted to our Dermatology Department for necrotic skin lesions on the limbs with a 4-month evolution. He was diagnosed a coronary disease by coronary angiography made six months earlier. He had also hypertension, hypercholesterolemia, and was anticoagulated with warfarin for atrial fibrillation.

The physical examination revealed purpuric papules and plaques with a necrotic center in the upper and lower limbs, including fingers and toes (Fig. 1). Erosions of the nasal mucosa were also observed.



Figure 1 Clinical picture.

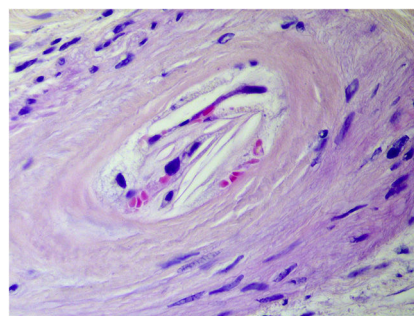


Figure 2 Histopathological examination of the skin biopsy: biconvex, needle-shaped clefts inside the arterioles of the dermis (hematoxylin-eosin 40 $\times$ ).

Laboratory testing was unremarkable, including autoimmunity (tests for antinuclear and anti-neutrophil cytoplasm antibodies were negative), viral serologies (HIV, HBV, HCV), serum protein electrophoresis, and cryoglobulins.

Skin biopsy showed biconvex, needle-shaped clefts inside the arterioles of the dermis, without signs of vasculitis (Fig. 2). Direct immunofluorescence of perilesional skin was negative

**What is the Diagnosis?**

## Diagnosis

### Obstructive Vasculopathy by Cholesterol Crystal Emboli (CCE)

The oral anticoagulant was withdrawn. Treatment for this patient included oral prednisolone (0.5 mg/kg/day) and statins, with progressive improvement of the cutaneous lesions. Unfortunately, the patient died of nosocomial pneumonia one month later.

## Comments

CCE is one of the complications of atherosclerosis. It usually occurs after a precipitating event, such as endovascular procedures, or in association with anticoagulant therapy.<sup>1,2</sup>

Virtually, all organs can be affected. A variety of clinical manifestations, ranging from asymptomatic to life-threatening, may be observed and are generally nonspecific. Consequently, the diagnosis of CCE is frequently a challenge, because often it simulates other diseases. Despite not being uncommon, it is still an under-recognized disease.<sup>1-3</sup>

The frequency of cutaneous findings in CCE varies from 35% to 96%. They include livedo reticularis, gangrene, cyanosis, ulceration, nodules, and purpura, which mainly occur on the lower limbs. The differential diagnoses include infectious, inflammatory, and vascular conditions, particularly embolic, coagulopathic, or vasculitic diseases that should warrant a skin biopsy as part of the diagnostic workup. Therefore, the presence of skin involvement, more than any other, should facilitate the diagnosis of CCE. Skin biopsies are fairly sensitive for CCE by showing the hallmark of cholesterol clefts within the arterioles in 92% of cases.<sup>3</sup>

The prognosis of CCE is poor, with mortality as high as 81%.<sup>3</sup>

There is no specific treatment for CCE. However, aggressive supportive care has been shown to have a significant benefit. Ceasing anticoagulation is recommended. The

benefit of steroids and statins has been suggested, but it is still unclear.<sup>3</sup>

Although CCE frequently presents as a multisystemic disease, it may also manifest only in the skin, similar to our case, which underlines the importance of the dermatopathologist on the correct diagnosis of this condition.

## Conflict of Interest

The authors declare not to have any conflict of interest.

## References

- Ozkok A. Cholesterol-embolization syndrome: current perspectives. *Vasc Health Risk Manag.* 2019;15:209–20, <http://dx.doi.org/10.2147/VHRM.S175150>. PMID: 31371977; PMCID: PMC6626893.
- Agrawal A, Ziccardi MR, Witzke C, Palacios I, Rangaswami J. Cholesterol embolization syndrome: an under-recognized entity in cardiovascular interventions. *J Interv Cardiol.* 2018;3:407–15, <http://dx.doi.org/10.1111/joic.12483>. Epub 2017 Dec 15. PMID: 29243285.
- Donohue KG, Saap L, Falanga V. Cholesterol crystal embolization: an atherosclerotic disease with frequent and varied cutaneous manifestations. *J Eur Acad Dermatol Venereol.* 2003;5:504–11, <http://dx.doi.org/10.1046/j.1468-3083.2003.00710.x>. PMID:

Â. Roda<sup>a,\*</sup>, R. Bouceiro-Mendes<sup>a</sup>, L. Soares-de-Almeida<sup>a,b,c</sup>

<sup>a</sup> *Centro Hospitalar Lisboa Norte EPE, Hospital de Santa Maria, Serviço de Dermatologia, Laboratório de Histopatologia Cutânea, Lisboa, Portugal*

<sup>b</sup> *Universidade de Lisboa, Faculdade de Medicina, Clínica Universitária de Dermatologia de Lisboa, Lisboa, Portugal*

<sup>c</sup> *Universidade de Lisboa, Faculdade de Medicina, Instituto de Medicina Molecular, Lisboa, Portugal*

\* Corresponding author.

E-mail address: [angela.neto.roda@gmail.com](mailto:angela.neto.roda@gmail.com) (Â. Roda).